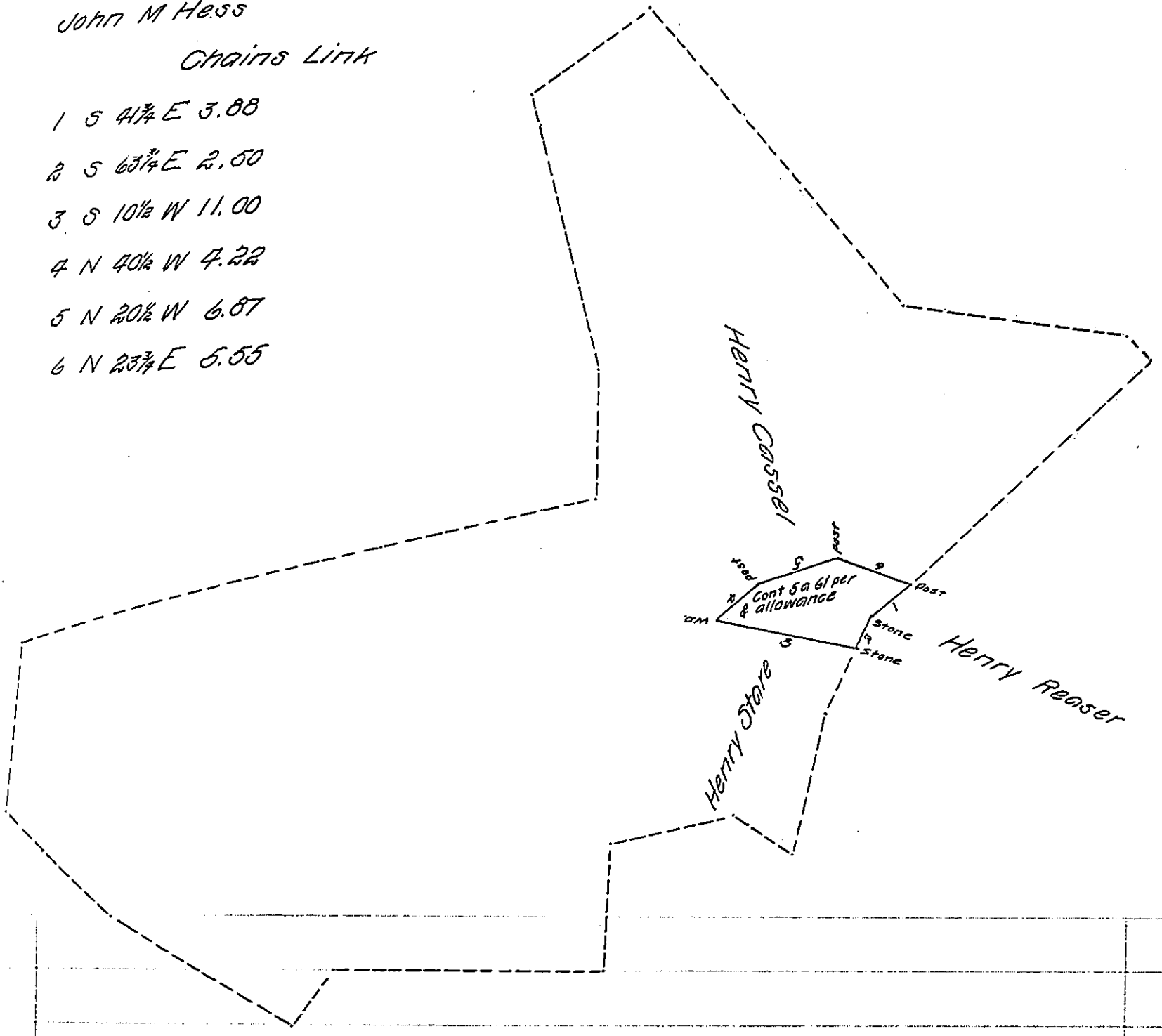


John M Hess

*Chains Link*

- 1 S 41<sup>3</sup>/<sub>4</sub> E 3.88
- 2 S 63<sup>3</sup>/<sub>4</sub> E 2.50
- 3 S 10<sup>1</sup>/<sub>2</sub> W 11.00
- 4 N 40<sup>1</sup>/<sub>2</sub> W 4.22
- 5 N 20<sup>1</sup>/<sub>2</sub> W 6.87
- 6 N 23<sup>3</sup>/<sub>4</sub> E 5.55



*A draft of a tract of land situate in Newberry Township in the County of York and State of Pennsylvania It being part of a larger tract surveyed to George Mansberger in pursuance of an application granted to Martin Mansberger dated June first A.D. 1768 N<sup>o</sup> 5024 Surveyed June 6<sup>th</sup> A.D. 1883 for ~~Augustus Z. Muckard~~ John M Hess a tract of land containing five acres 61 perches and the usual allowance*

*To the Secretary of Internal Affairs \_\_\_\_\_*

*W<sup>m</sup> T Williams C. S.*

*IN TESTIMONY that the above is a copy of the original remaining on file in the Department of Internal Affairs of Pennsylvania, made conformably to an Act of Assembly approved the 16th day of February, 1833, I have hereunto set my Hand and caused the Seal of said Department to be affixed at Harrisburg, this eighth day of May 1905*

*Soac R Pearson*  
 Secretary of Internal Affairs.